

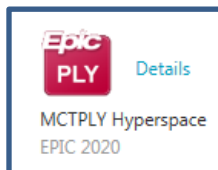
EPIC

FOR: All EPIC Users

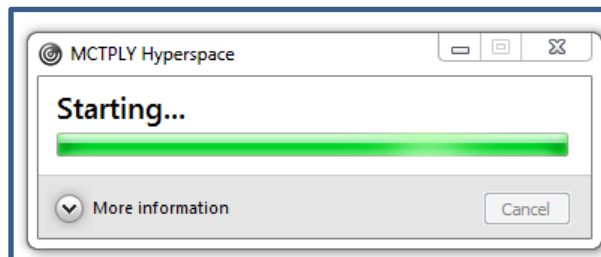
TOPIC: How to launch Epic Playground (PLY) on campus and remotely

This document outlines how Epic users can access Epic (PLY) icon from their workstations and from home (remotely)

ACCESSING EPIC FROM YOUR WORKSTATION

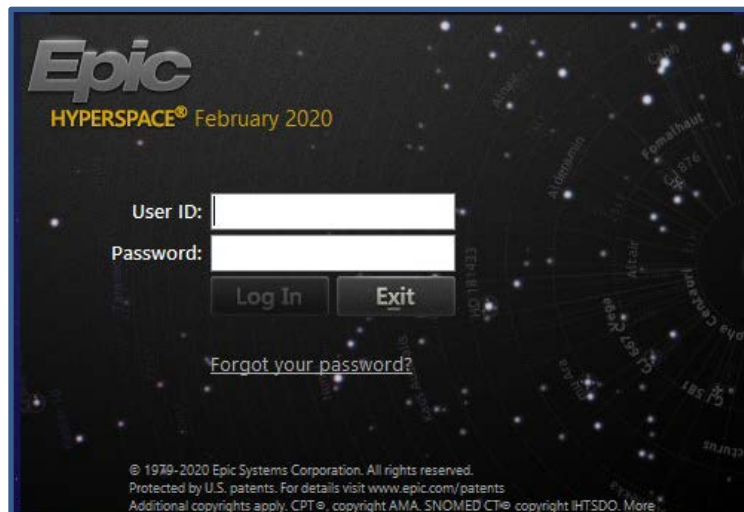


Step 1. Access from the workstation desktop (icon displayed)



Step 2. Hyperspace begins to load

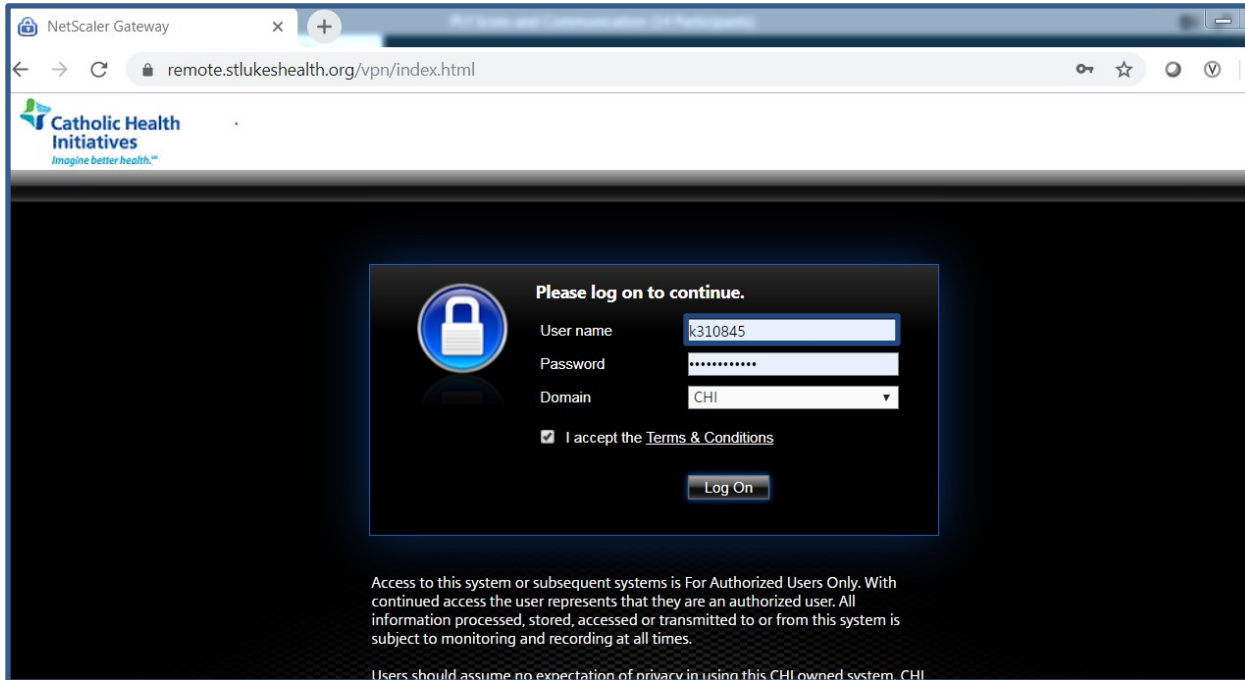
Step 3. Hyperspace Login page displays - see Epic Playground (PLY) Login document to select appropriate login.



ACCESSING EPIC PLAYGROUND (PLY) FROM HOME OR REMOTELY

Step 1. If you do not have Citrix Receiver downloaded on your device copy the link below into your URL field to download. <https://www.citrix.com/downloads/citrix-receiver/windows/receiver-for-windows-latest.html>

Step 2. Enter: <https://remote.stlukeshealth.org/vpn/index.html> into the URL field. Login screen opens.

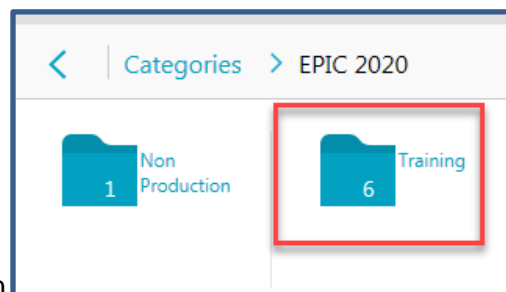


Step 3. Enter: **Your CHI Login User Name & Password**

Step 4. Select Domain: **CHI**

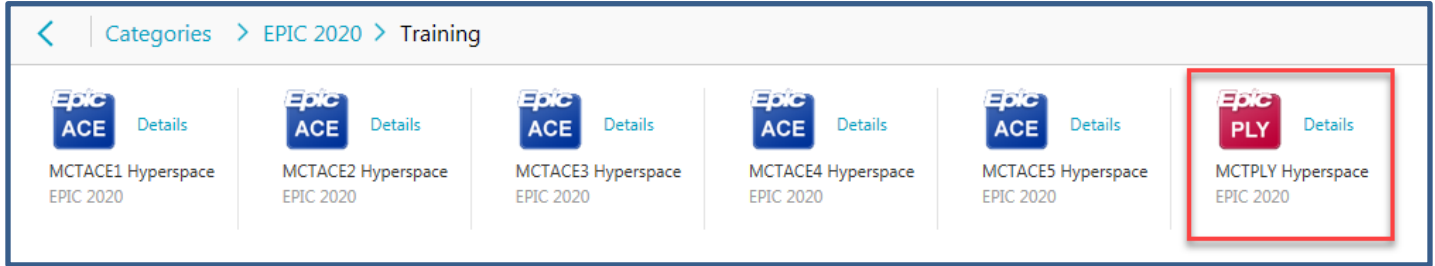
Step 5. **Click: I Accept the Terms & Conditions**

Step 6. **Click: Log On**

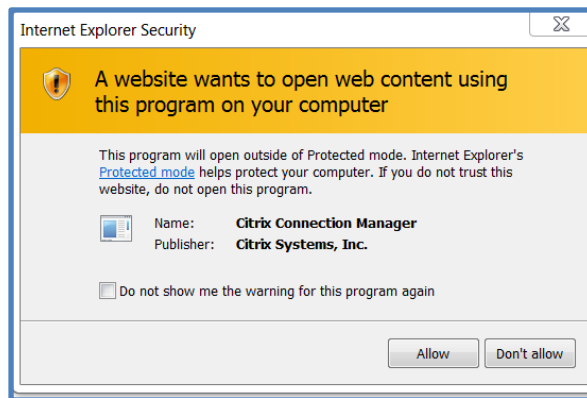


Step 7. **Click on the Training folder icon**

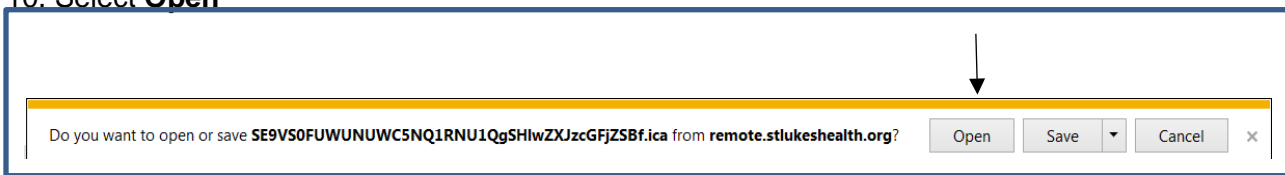
Step 8. Click on **MCTPLY Hyperspace** icon



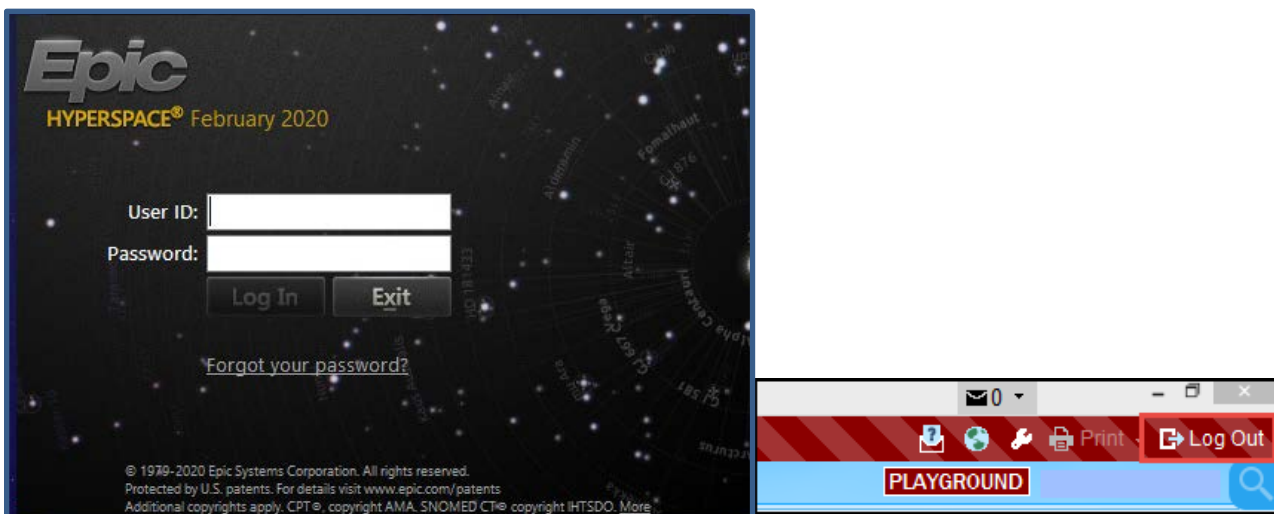
Step 9. Internet Explorer Security window opens, select **Allow**



Step 10. Select **Open**



Step 11. **Hyperspace** login page displays - see Epic Playground (PLY) Login document to select appropriate login. When logging out **click Log Out** to exit and close screen.



NOTE: Patient data is refreshed daily. However, train patients that are discharged while user is practicing in PLY will not be visible to other users after an hour has lapsed.